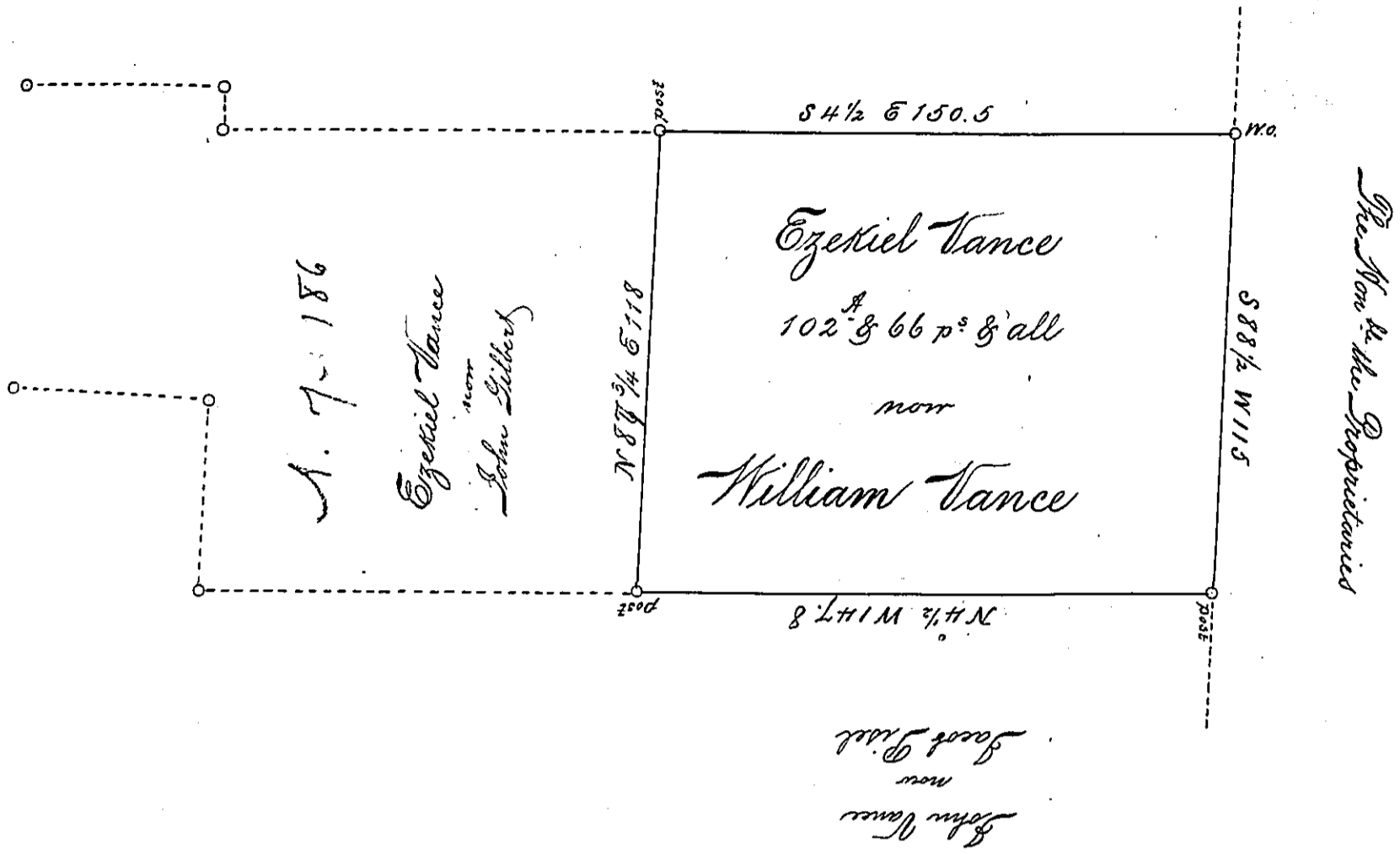


John Lawrence



Situate in Mariellen Township York County  
 and is part of a Larger Tract Surveyed by Arch-  
 ibald M. Clean D.S. for Ezekiel Vance the 11<sup>th</sup>  
 Day of December 1766 In pursuance of a Warrant  
 Dated November 14<sup>th</sup> 1766 Called Vances Branch  
obliterated Divided from the whole Tract this 24<sup>th</sup>  
 Day of June 1793 for William Vance  
 By Moses M. Clean D.S.

To Daniel Brodhead, Esq. Surveyor General

the whole Tract contains 200<sup>as</sup> 12<sup>& all</sup> p<sup>s</sup> granted Ezekiel Vance

IN TESTIMONY that the above is a copy of the original remaining on file in the  
 Department of Internal Affairs of Pennsylvania, made con-  
 formably to an Act of Assembly approved the 16th day of  
 February, 1833. I have hereunto set my Hand and caused  
 the Seal of said Department to be affixed at Harrisburg, this  
 third day of December 1895.

James W. Latta  
 Secretary of Internal Affairs.